

Seattle United S Black G01

Seattle United Regional

Seattle, WA

G01 total strength=454

attack=0.26 defense=0.34

fall league = NPSL G12D1, NPSL Spr G12D1

alt names used:

Venues played:

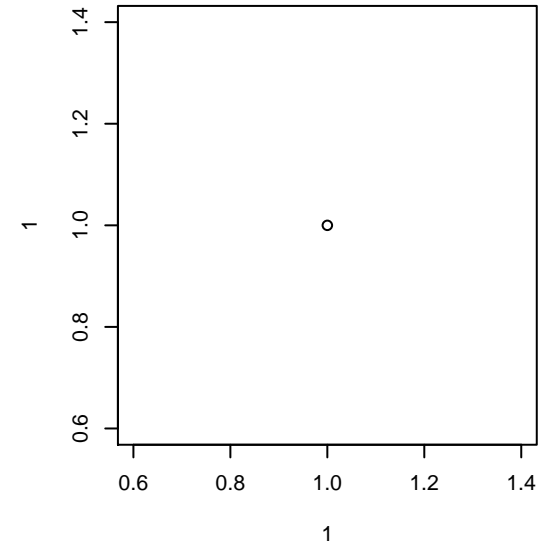
Shoreline Classic GU12-13 Silver

Sky River GU12

NPSL G12D1

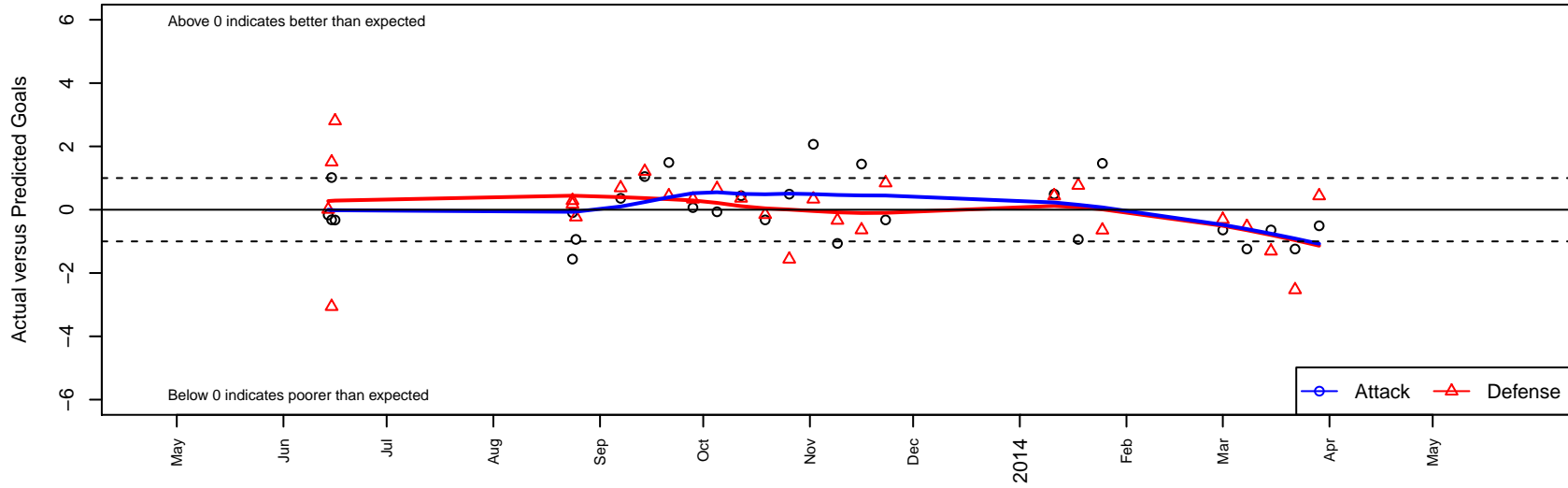
Founders Cup G01

NPSL Spr G12D1



Seattle United S Black G01

Dots are actual minus expected GF (blue circles) and GA (red triangles).
Blue line is smoothed change in attack strength. Red is smoothed change in defense strength.



	date	home		away		venue	pred.home	pred.away
7525	2014-03-29	Kent United Green G01	1	Seattle United S Black G01	0	NPSL Spr G12D1	1.44	0.51
7466	2014-03-22	Seattle United S Black G01	0	Kent United White G01	4	NPSL Spr G12D1	1.24	1.47
7379	2014-03-15	Crossfire Select Granston G01	3	Seattle United S Black G01	0	NPSL Spr G12D1	1.69	0.64
7281	2014-03-08	Kent United White G01	2	Seattle United S Black G01	0	NPSL Spr G12D1	1.47	1.24
7179	2014-03-01	Seattle United S Black G01	0	Crossfire Select Granston G01	2	NPSL Spr G12D1	0.64	1.69
6962	2014-01-25	Seattle United S Black G01	5	Newport FC Predators-Galaxy G01	1	Founders Cup G01	3.54	0.36
6903	2014-01-18	North Whidbey Islanders G01	0	Seattle United S Black G01	0	Founders Cup G01	0.77	0.94
6866	2014-01-11	Kent United Green G01	1	Seattle United S Black G01	1	Founders Cup G01	1.44	0.51
6669	2013-11-23	NSC Velocity G01	1	Seattle United S Black G01	0	NPSL G12D1	1.85	0.32
6582	2013-11-16	Seattle United S Black G01	2	Lake Hills Extreme G01	2	NPSL G12D1	0.56	1.36
6477	2013-11-09	Seattle United S Black G01	1	MIFC Thunder G01	1	NPSL G12D1	2.06	0.67
6335	2013-11-02	Crossfire Select Wilkinson G01	1	Seattle United S Black G01	3	NPSL G12D1	1.33	0.93
6178	2013-10-26	Seattle United S Black G01	1	Kent United Green G01	3	NPSL G12D1	0.51	1.44
6018	2013-10-19	Seattle United S Black G01	0	NSC Velocity G01	2	NPSL G12D1	0.32	1.85
5860	2013-10-12	Lake Hills Extreme G01	1	Seattle United S Black G01	1	NPSL G12D1	1.36	0.56
5673	2013-10-05	MIFC Thunder G01	0	Seattle United S Black G01	2	NPSL G12D1	0.67	2.06
5504	2013-09-28	Seattle United S Black G01	1	Crossfire Select Wilkinson G01	1	NPSL G12D1	0.93	1.33
5368	2013-09-21	Kent United Green G01	1	Seattle United S Black G01	2	NPSL G12D1	1.44	0.51
5199	2013-09-14	Seattle United W Blue G01	0	Seattle United S Black G01	2	NPSL G12D1	1.21	0.95
5046	2013-09-07	Seattle United S Black G01	1	Crossfire Select Granston G01	1	NPSL G12D1	0.64	1.69
4952	2013-08-25	Seattle United S Black G01	0	North Whidbey Islanders G01	1	Sky River GU12	0.94	0.77
4916	2013-08-24	Cascade FC White G01	0	Seattle United S Black G01	2	Sky River GU12	0.17	2.09
4918	2013-08-24	Seattle United S Black G01	1	Fire SA Juniors Red G01	0	Sky River GU12	2.56	0.29
8005	2013-06-16	MIFC Maroon G00	1	Seattle United S Black G01	0	Shoreline Classic GU12-13 Silver	3.81	0.33
7960	2013-06-15	Seattle United NE White G00	0	Seattle United S Black G01	2	Shoreline Classic GU12-13 Silver	1.51	0.98
7964	2013-06-15	Seattle United S Black G01	0	SCORE Rockets G00	5	Shoreline Classic GU12-13 Silver	0.32	1.94
7932	2013-06-14	Seattle United S Black G01	1	West Seattle Streak G00	2	Shoreline Classic GU12-13 Silver	1.17	2.01